

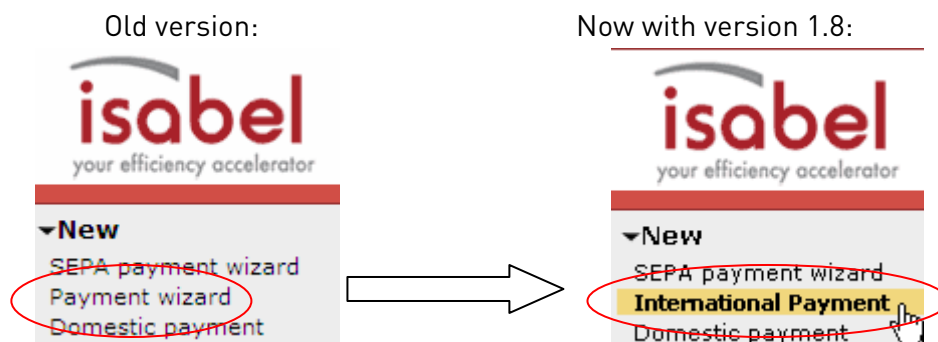
Isabel 6

An overview of what's new in version 1.8

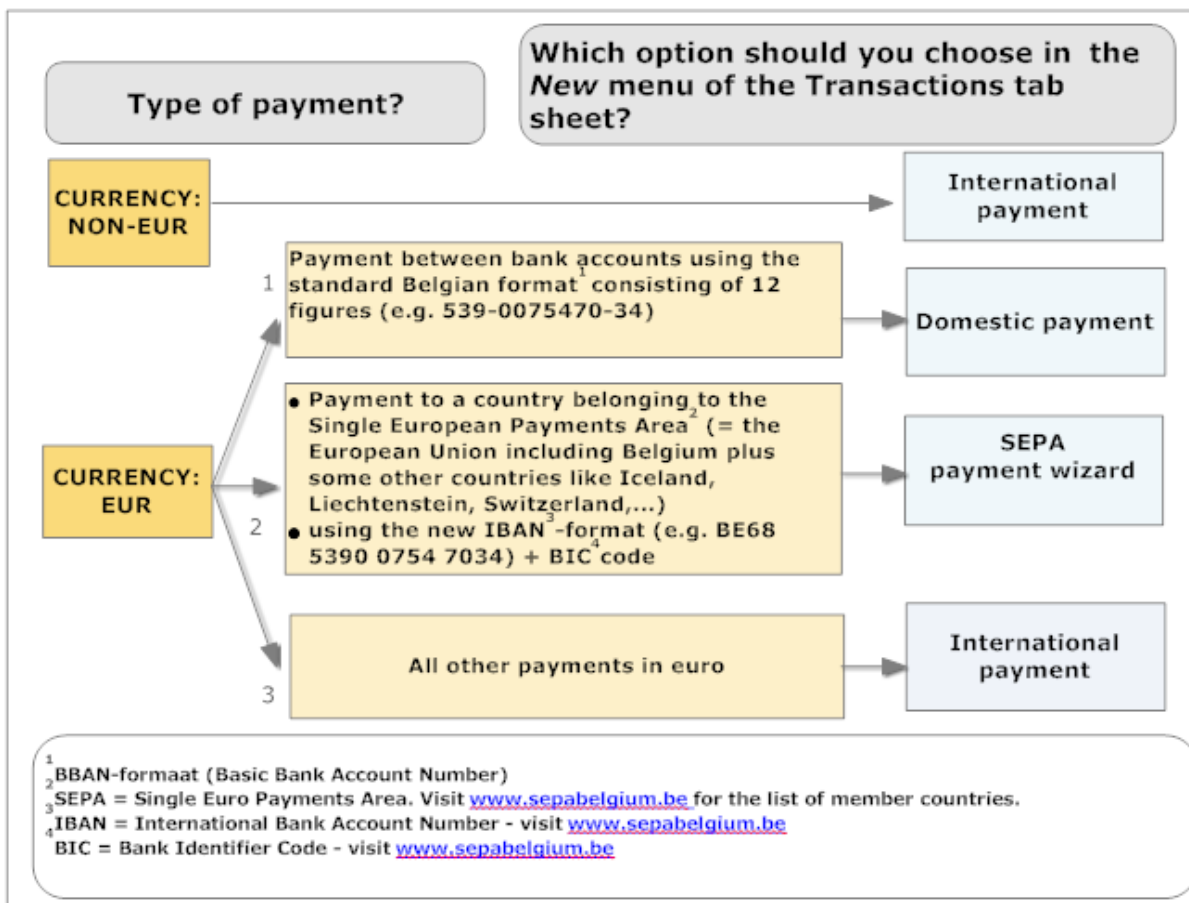
Dear Isabel User,

Version 1.8 features a whole range of enhanced features and improvements. We have ironed out a lot of bugs. We have also made quite a few changes that you will see immediately in your user interface:

'Payment wizard' has changed its name to 'International Payment'



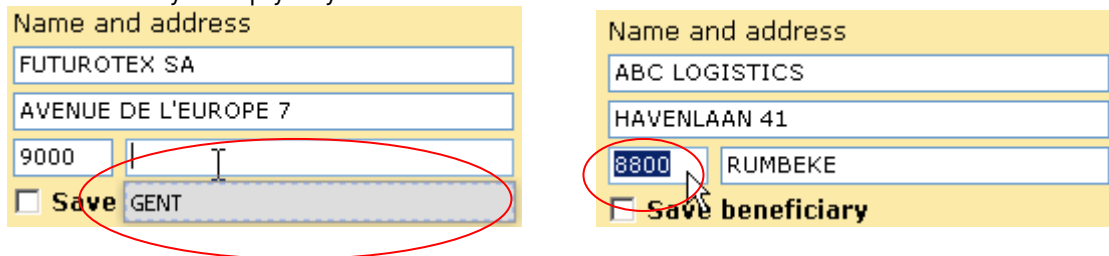
What payment type do I choose from the left-hand menu on my Transactions tab page? To make things simpler for you, we have renamed the old *Payment wizard* and it is now called **International Payment**, because the new term covers the type of transaction better. This is a summary of the various wizards and what they are used for:



- **SEPA payment wizard:** designed for all transfers within the single European payments area provided that you know the IBAN (international bank account number) and BIC code (bank identification code) of the beneficiary.
- **International payment:** this wizard is intended mainly for your international payments in non-EUR and EUR currencies. The old name of *Payment wizard* has now been changed to *International payment* to increase clarity.
- **Domestic payment:** for most Isabel 6 users, this is the wizard they use most frequently to make (non-SEPA) payments in EUR from one Belgian (non IBAN) account to another Belgian (non IBAN) account.

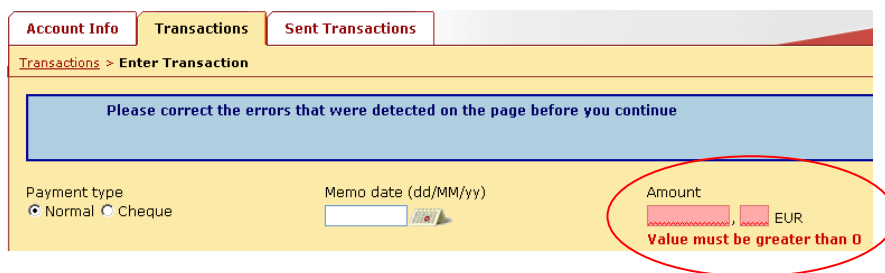
Greater ease of use through the automatic display of Belgian postcodes/towns/cities

When entering the details of a Belgian domestic payment, the actual locality is automatically displayed when you enter the postcode. Or, vice versa, when you enter the locality, the postcode is filled in automatically. Simply key in the first letters of a town and then select from the list of choices shown.



Clearer error indication

If you make an error when entering the details of a payment, or when managing your counterparties, you will now see a clearer indication of the error on your screen, prompting you to make a correction. The field that needs correcting is indicated with a red background colour.



Enhanced reports

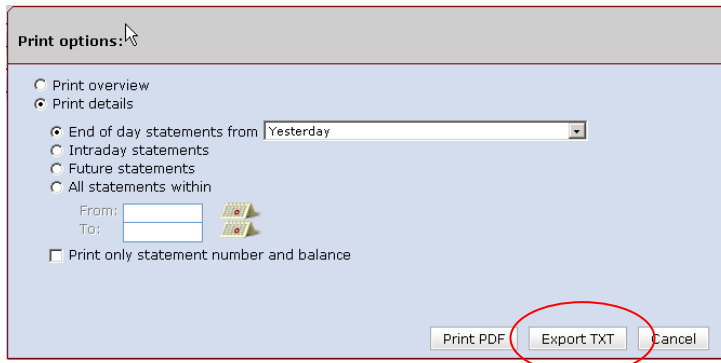
The print reports in PDF format have a new layout. Data are presented in a more structured and clearer way. These printouts look like the ones you are familiar with in your Isabel Business Suite 5.0 version.

Reports from Isabel 6 easily processed in Microsoft Excel

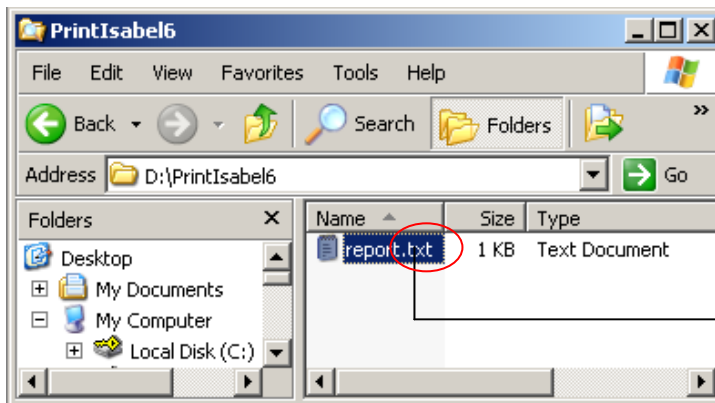
The print reports that you request in Isabel 6 can also be worked on further in Microsoft Excel. When printing, you can now choose between *Export TXT* or *Print PDF*. If you select *Export TXT*, you can simply rename the file in CSV format (= Comma Separated Value). This format can then easily be imported into your Microsoft Excel spreadsheet.

How do you do it?

1. Produce your report. Click on **Print**. Click on **Export TXT** in the *Print options* screen.



2. You then see a summary screen. Click on **Save as**. Select the location on your hard disk or network where you want to save the file.
3. Go to the location where you have saved the file. Rename the TXT file as a CSV file if you want to use it in an Excel spreadsheet. The various labels on your printout will be shown in English on your Excel spreadsheet to make using macros easier.



Name	Size	Type
report.csv	1 KB	Microsoft Office Exc...

Rename the .txt file to a .csv file so that you can read it in MS Excel and save it as an .xls file

If you have any questions about using Isabel 6, please go to www.isabel.eu/support6.

We wish you every success with Isabel 6!

The Isabel Team